

# THE WORST DAY EVER!

## JAMES BISHOP

### CREATE YOUR OWN ALIEN PLANET!

READING NOTES AND ACTIVITIES FOR KS2

Suitable for: Ages 7+

Includes: Extracts from the book + corresponding reading questions  
+ a sequence of lessons to create a new alien planet!

Subject Checklist:

- ✓ Reading Comprehension and Inference
- ✓ Writing
- ✓ Art, Design & Technology
- ✓ Geography



ABOUT THE BOOK

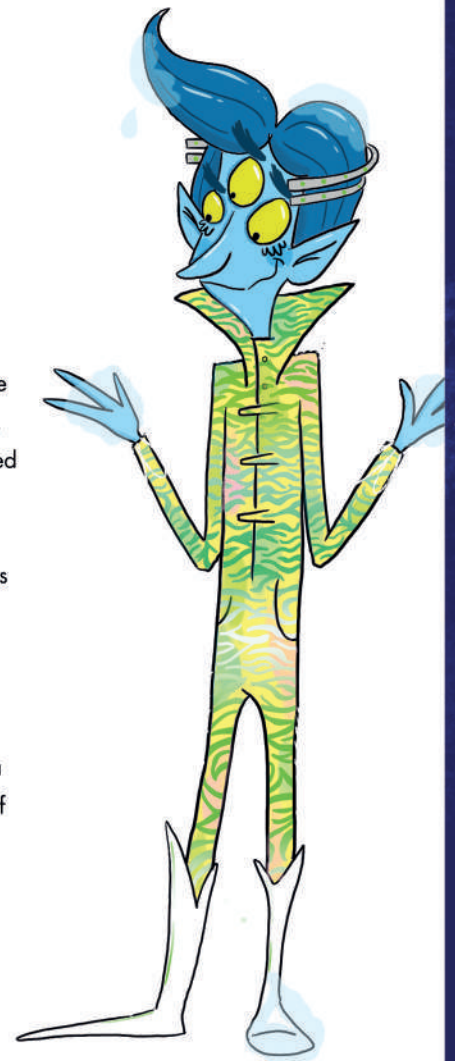
### THE WORST DAY EVER!

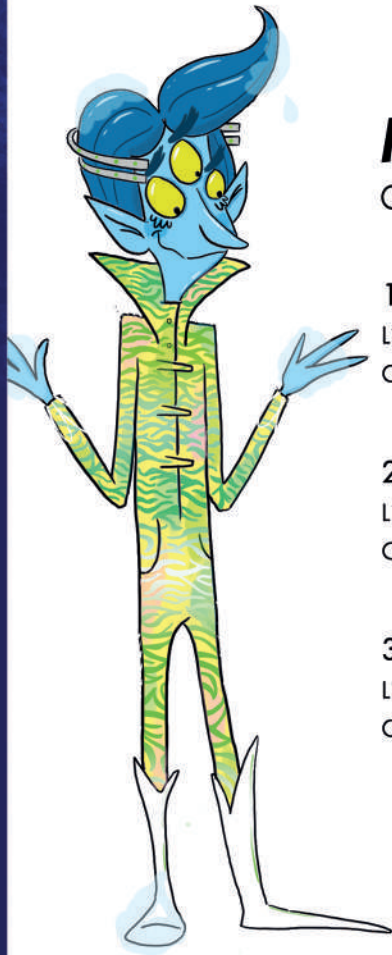
Meet Mylan. He's just an ordinary blue alien. He's travelling the universe, looking for someone having a bad day, to help them. Meet Chloe. She's just stubbed her toe. Now she's being followed by an alien. Her day can only get better, right? WRONG.

Every bad day begins with a stubbed toe. Mylan Bletzleburger's research proves this. But even he couldn't predict how Chloe's day would escalate from a sore foot to the entire Earth being swallowed up.

Can Mylan and Chloe save the planet? Will Mylan ever pilot a cool spaceship? And will Tanka Tanka Woo Woo, the Queen of the Universe, ever share her haircare secrets?

Funny and packed with action and quirky aliens, this intergalactic adventure is out of this world!





## RESOURCE PACK

### OBJECTIVES & OUTCOMES

#### 1. Empathia: Word Detectives Pages 12–13

Literacy Focus: Retrieve information from the text; identify and use interesting and varied vocabulary.

Outcome: A 'Senses Map' to use in planet descriptions.

#### 2. Plan Your Alien Planet!

Literacy Focus: Plan the structure of a piece of writing using a map; use a thesaurus to expand vocabulary.

Outcome: An annotated map of a planet to support descriptive writing.

#### 3. Welcome to My Planet

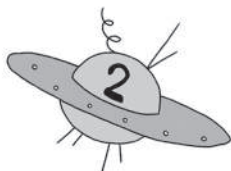
Literacy Focus: Use varied and interesting vocabulary in descriptive writing; write for an intended audience.

Outcome: A description of a planet to go into 'Mylan's Galactical Guide.'



# 1: EMPATHIA: WORD DETECTIVES

PAGES 12–13



## EMPATHIA

Smack bang in the middle of the Emota Galaxy, just off Hyperspace Byway 42, sits a little yellow and red planet called Empathia.

A place where the sun shines every second, of every day, throughout the year.

A place where everything smells of candyfloss and the sea tastes like cranberry juice.

A place where the birds (and trees) all sing together in perfect harmony.

A place of simple perfection.

A utopia.

My home.

12

Not much has been written about Empathia, so the chances are this is the first time you've heard about it. We keep ourselves to ourselves, no one visits and we don't get out much – or at all, in fact – and there is a very good reason for that.

You see, we Empathians feel everything, and I mean EVERYTHING! We are cursed with an overwhelming sense of empathy for others. Sounds weird, right? Let me explain. Imagine you stub your toe on the edge of your bed. Pretty painful, yes? But only for you. As you hop around, screaming and shouting, rubbing the sore spot as if that would help (I mean, it really doesn't, does it?!), chances are no one else really cares.

If you lived on Empathia, however, we would be hopping around with you. We have so much empathy for others that we feel exactly what those around us are feeling, from complex emotions to stubbed toes. It is EXHAUSTING!

The worst part is that our empathy sensors are super sensitive. I can pretty much feel everything that anyone is feeling across an entire planet. At the same time.

13

- What does Empathia look like?
- Highlight any adjectives or noun phrases.
- What is a 'utopia'? What's your idea of utopia?
- What is unusual about the trees on Empathia?
- What does it mean to have empathy for others?
- Why is being empathetic a problem for the inhabitants of Empathia?

## ACTIVITY


Create a Senses Map of Empathia. Use words and phrases from the text but add extra ideas and details of your own too. You can even include sketches and drawings if you prefer!





# 1: EMPATHIA: WORD DETECTIVES - CONT

PAGES 12-13

**SEE?** 

**HEAR?** 

**SENSES  
MAP**

**SMELL/ TASTE?** 

**FEEL/ TOUCH?** 



## 2: PLAN YOUR ALIEN PLANET!



### ACTIVITY 1:

Generate a name. Pick one word from Column A, one word from Column B and voilà! You have yourself a planet. Alternatively, come up with your own planet name. You might base your name on a feeling, an action or an emotion – a bit like 'Empathia'.

COLUMN A	COLUMN B
Xargex	10
Phoeble	Blue
Blimble	Xong
Planet	Blibble
Yoonit	Fleb
Zingle	Phelon
Fliffsy	Axon

### ACTIVITY 2:

Draw a map of your newly named planet.

#### THINK ABOUT:

- What physical features will it have? (Mountains, volcanoes, lakes, icebergs?)
- Is it inhabited?
- Are there any buildings?
- Are there roads?

#### NEXT:

Imagine you are on your alien planet. Use your senses and create a new Senses Map for your own alien planet. What can you see, hear, smell, taste, and feel?

Name and label the key features of your alien planet using words from your Senses Map. For example: Slippery, Slimy, Swampy, Toxic, Gloopy, Deadly, Acidic.



## 2: PLAN YOUR ALIEN PLANET! - CONT

ACTIVITY 2

**SEE?** 

**HEAR?** 

**SENSES  
MAP**

**SMELL/ TASTE?** 

**FEEL/ TOUCH?** 



### 3: WELCOME TO MY PLANET

You are going to write a description of your planet to go into 'Mylan's Galactical Guide.'  
Use your Map and your Senses Map to help you. You might also want to use a thesaurus to help you choose some more adventurous words.

#### THINK ABOUT:

- Who is going to be reading 'Mylan's Galactical Guide'? Holidaymakers and tourists? Intergalactic explorers?
- What are they going to want to know about your planet (entertainment, hazards, statistics)?
- What other information would be useful to them?

#### NEXT:

Write your description, being sure to include all the interesting vocabulary you've found and thinking about your intended audience. Can you try and start your sentences in different ways? (With a fronted adverbial, an extended noun phrase, or a conjunction, for example.)

#### FURTHER CHALLENGES:

Make a 3D model of your planet.

Record a weather or news report live from your planet.

